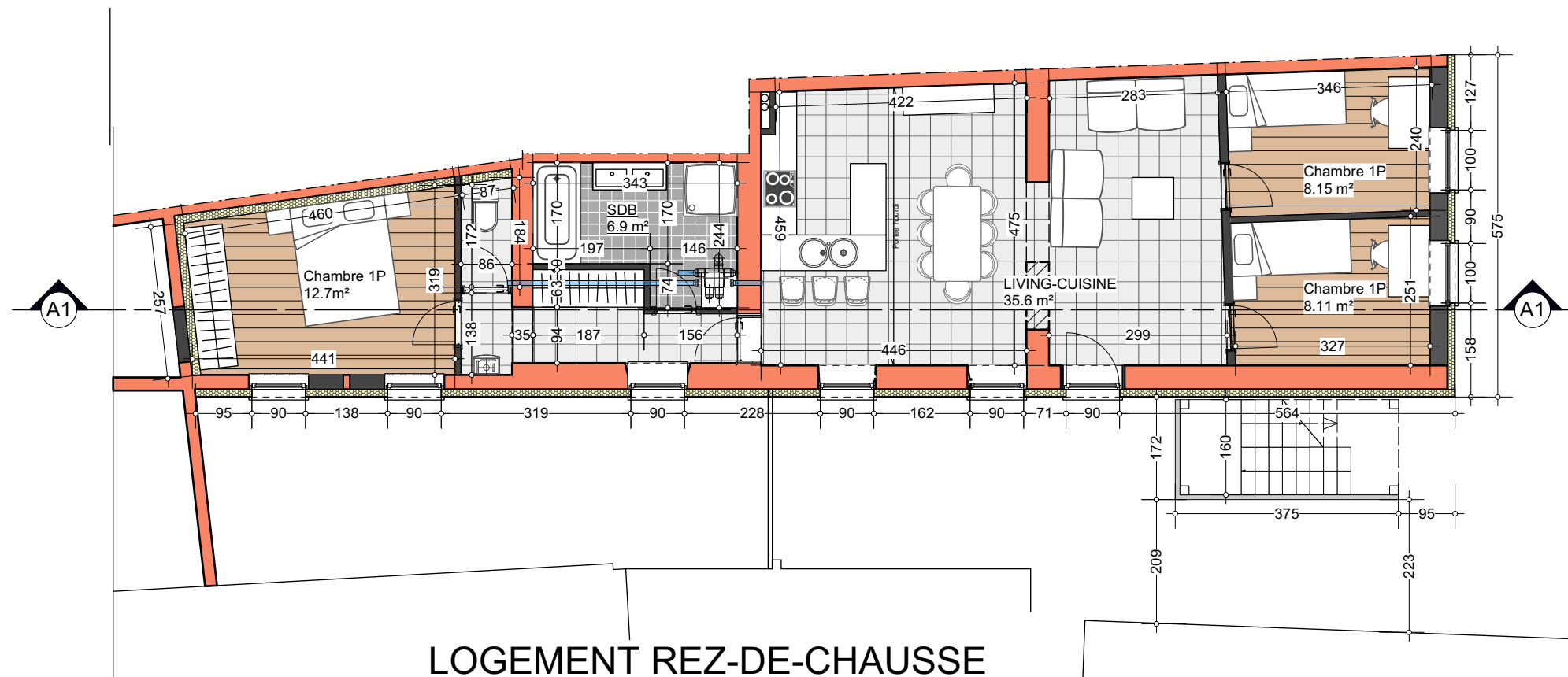
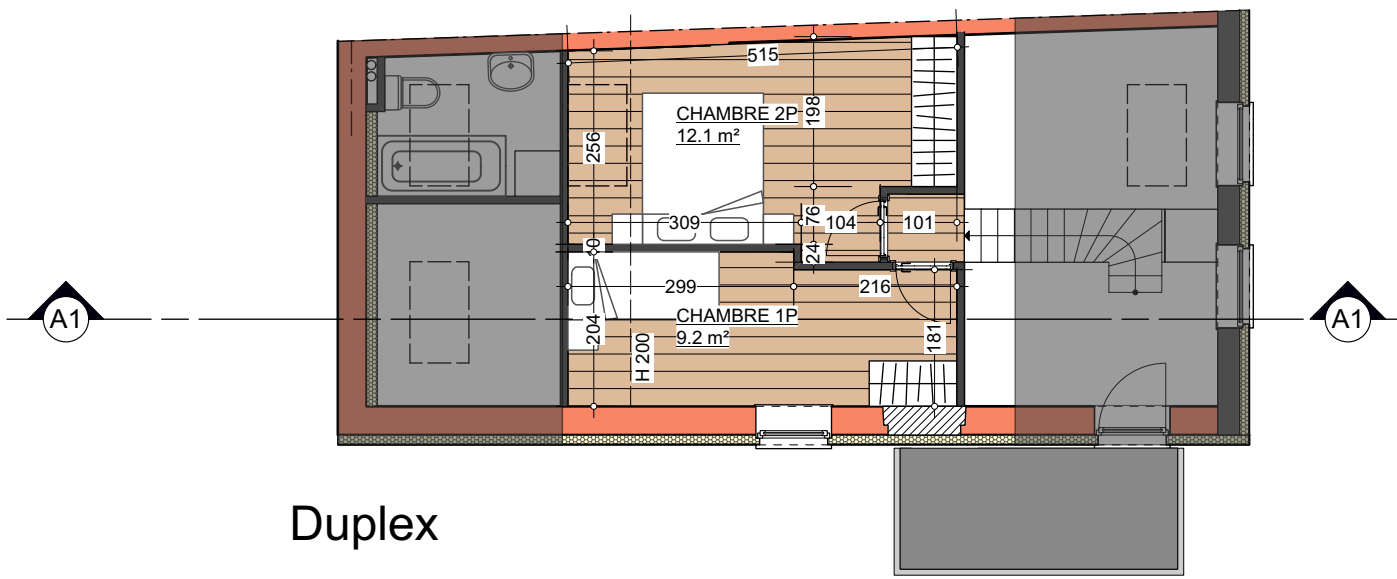


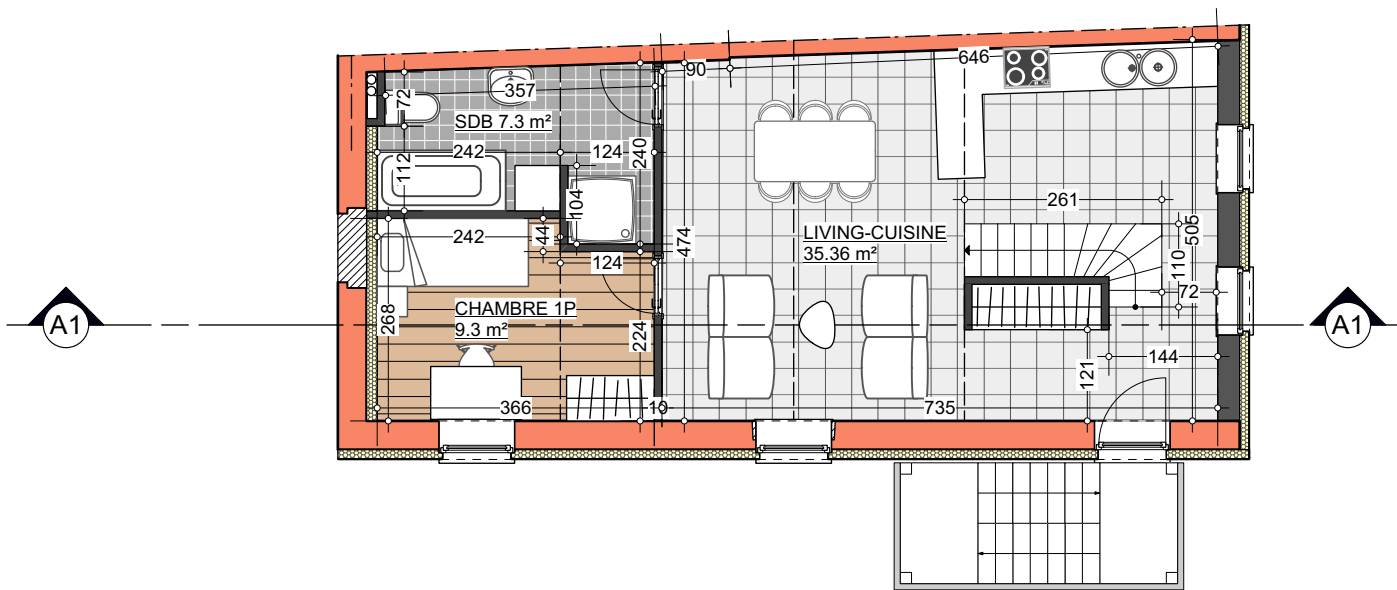
LOGEMENT 1er étage
1 chambre - Niv. 2.72m



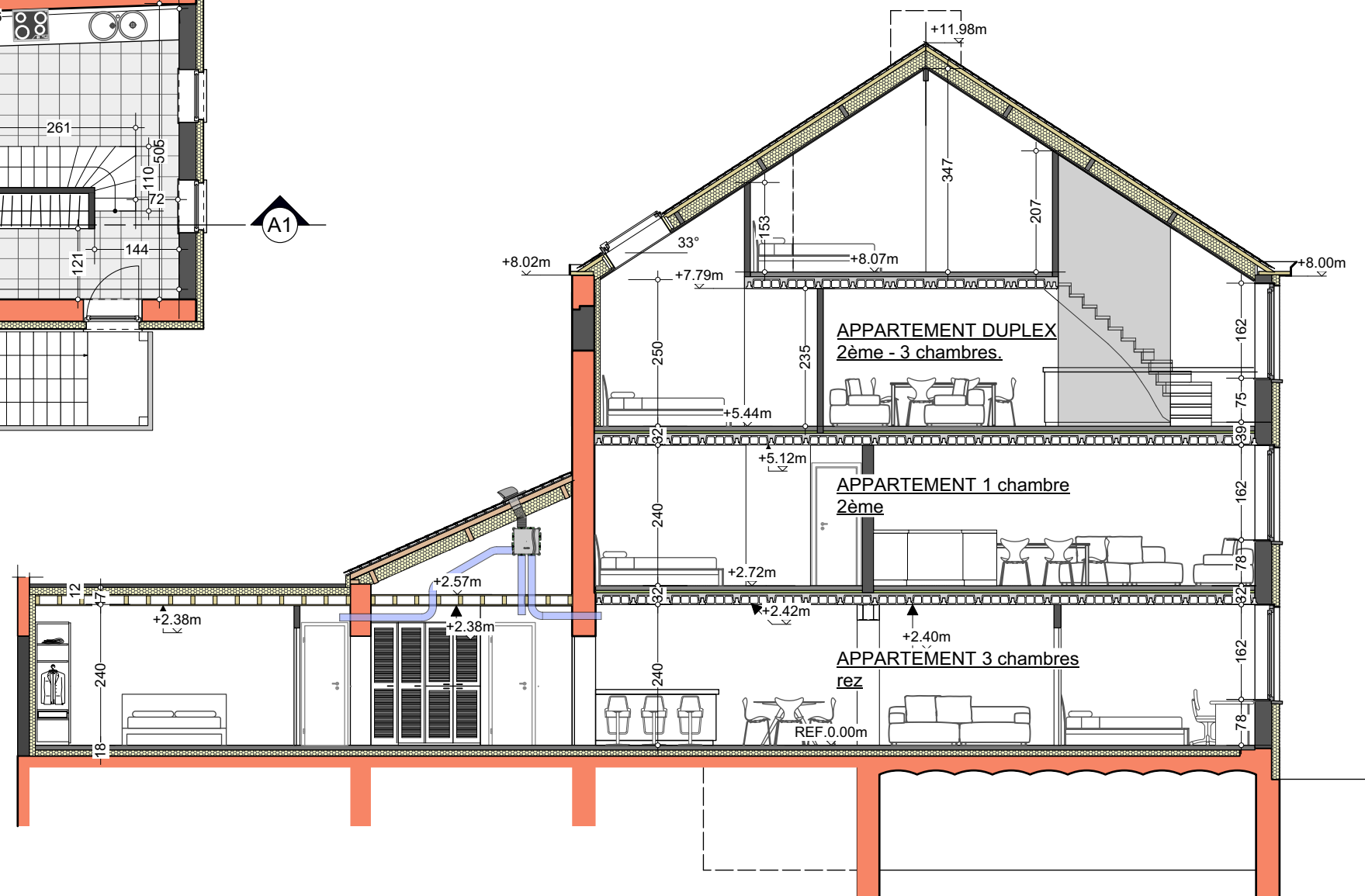
LOGEMENT REZ-DE-CHAUSSEE
3 chambres - Niv. 0.00m



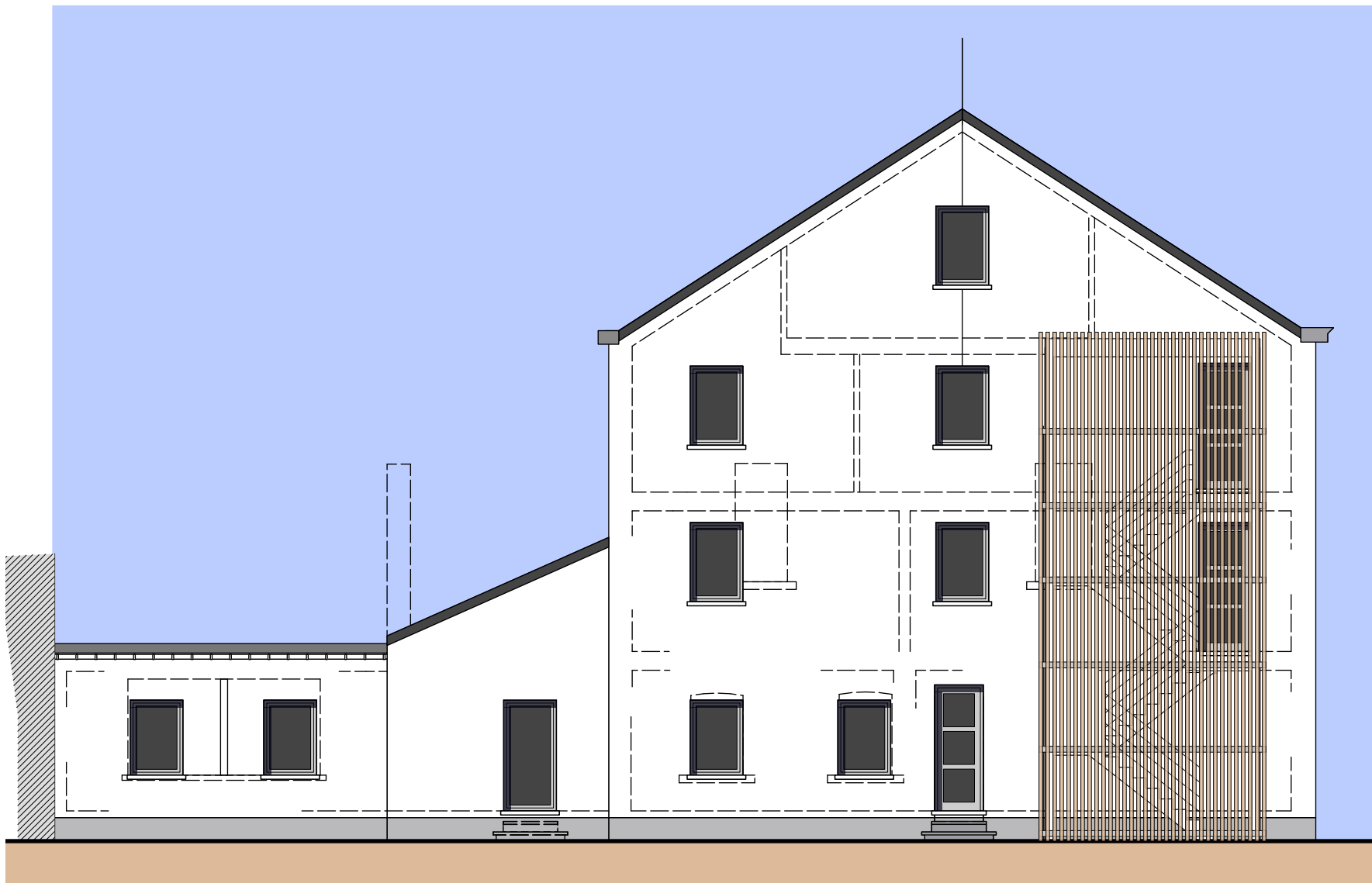
Duplex



LOGEMENT 2ème étage
3 chambres - Niv. 5.44 m et 8.07 m



Arch. F. Bellazecca 0475/22.90.53 - archfb@gmail.com



FACADE LATERALE



FACADE A RUE